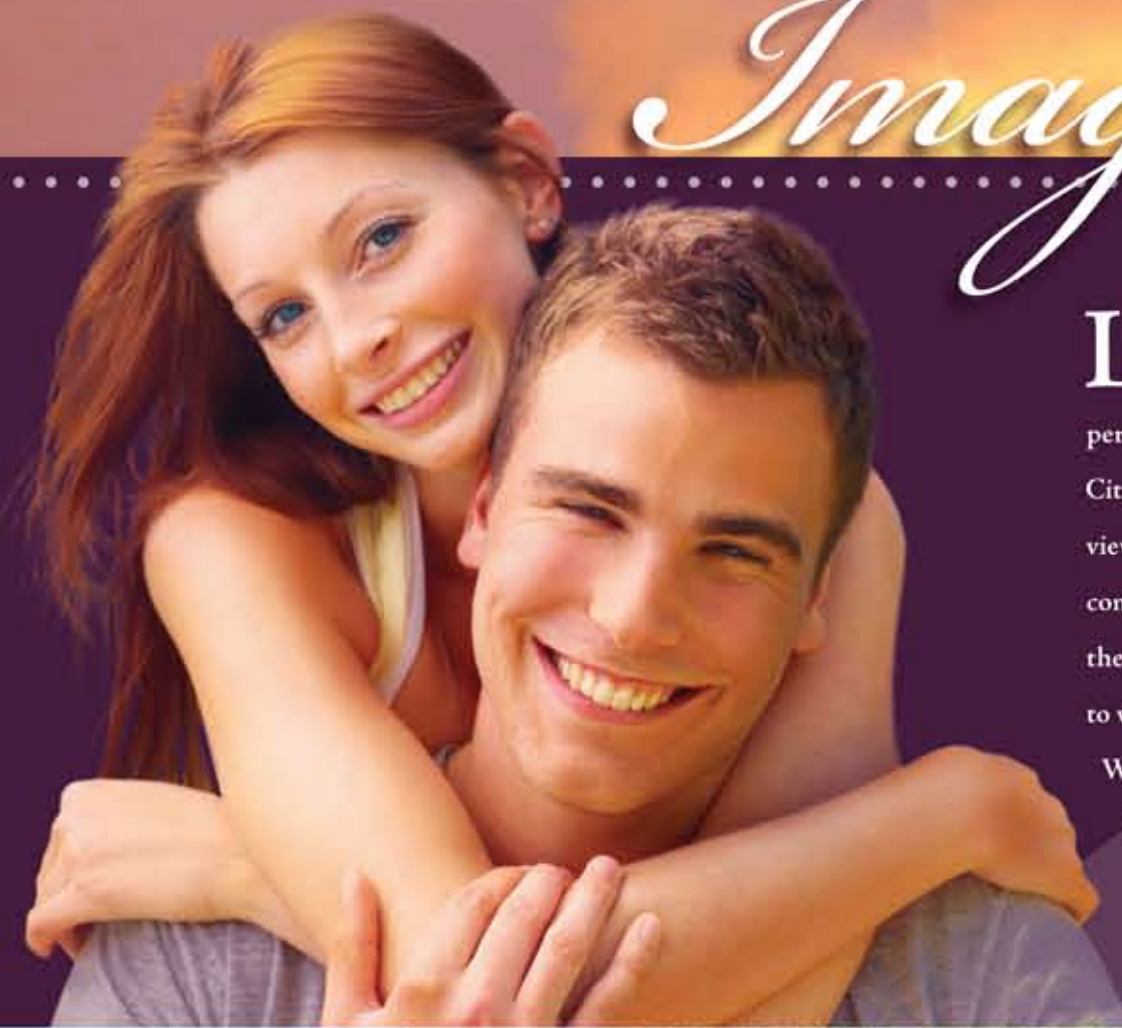


Imagine



Live the MillCreek Terrace lifestyle in our secured, gated community, perfectly located in the heart of Salt Lake City. Imagine waking up to incredible views of the Wasatch Mountain range, coming home to beautiful sunsets over the Great Salt Lake, and falling asleep to views of this historic city's skyline.

We invite you to experience Mill Creek Terrace, a place where you can rediscover the best life has to offer.



a whole new view of life.

Salt Lake City

Close to all the conveniences of a modern metropolis, yet within minutes of amazing skiing, mountain recreation, and more, Salt Lake City is a wonderful place to live. Known for its hospitality, its unique history, and its comfortable lifestyle, Salt Lake is the perfect location for you to experience life from a fresh, new perspective.



Salt Lake City, host of the remarkable 2002 Winter Olympics



Mill Creek Terrace offers access to Salt Lake's incredible cultural activities, including the renowned Utah Symphony.



Utah is home to several collegiate and professional sports teams, including the University of Utah Utes.



Utah skiing is some of the world's finest!



MILL CREEK TERRACE
3944 SOUTH 900 EAST
SALT LAKE CITY, UT 84124

(801) 663-3994
JAYRRICE@MSN.COM
WWW.JARDEVCO.COM/MILLCREEK

Design and rendering by www.kinatrader.com. Olympic photograph by Steve Greenwood.

Mill Creek TERRACE

A WHOLE NEW VIEW OF LIFE

Experience Mill Creek Terrace



Left: Enjoy magnificent interiors with raised ceilings, beautiful recessed lighting, crown moulding, and expansive views of Salt Lake City's skyline. Right: Enjoy our splendid gated community, complete with a community spa and park, set before the majestic backdrop of Mount Olympus!



Right: Our bedrooms feature large windows with beautiful balconies opening on to Salt Lake City. All units feature fireplaces, granite countertops, choice of knotty alder, maple, or oak cabinets, jetted tubs, laundry room/closet, balconies, and secure, heated indoor parking on the main level.

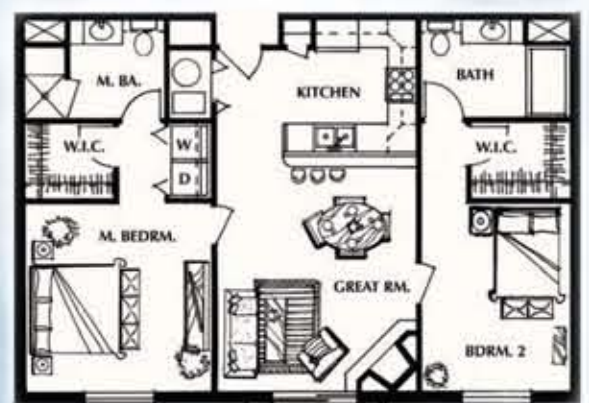


1050 S.F. - 2BR/2B*

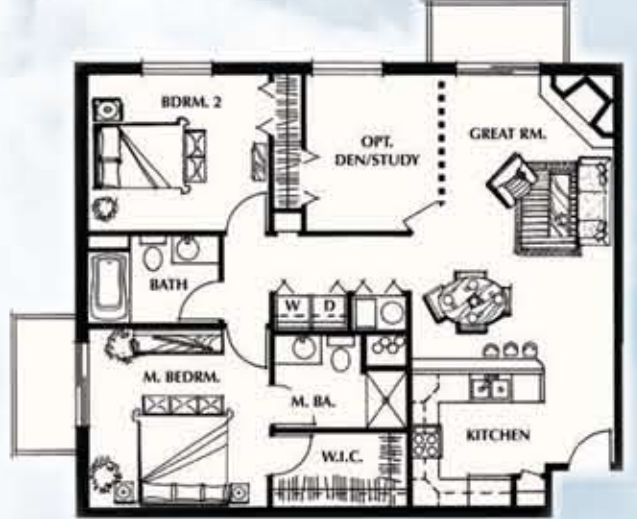


Floorplans, Floors 2 and 3

1090 S.F. - 2BR/2B



1210 S.F. - 2BR/2B/Den



Penthouse Suites, Floors 4 and 5

Our Penthouse Suites provide unobstructed views of the mountains, valley, and city. Each of the four 1950 sq. ft. suites incorporates the entire end of the penthouse levels, with sweeping 270° views. Complete with 10' ceilings, large master bedrooms, cozy fireplaces, spacious walk-in closets, finely crafted kitchens, walnut hardwood flooring, and more, these suites are the perfect way to enjoy Salt Lake in style!



1050 SF - 3BR/2.5B/Den/Laundry



1550 S.F. - 2BR/2.5 B/Den



Below: With several nearby golf courses, as well as incredible outdoor recreation accessible within minutes of Mill Creek Terrace, we provide you with the chance to get away from your busy life and simply relax.



A Whole New View of Life!

* A small number of 1050 floor plans are also available as penthouse units. Please contact us for availability.